

# Death Valley Rally

Bishop-Dumont  
Dumont-Parker  
Parker-Yuma

*Hardcore Rally Training*

## Assistance Point Aerial Images



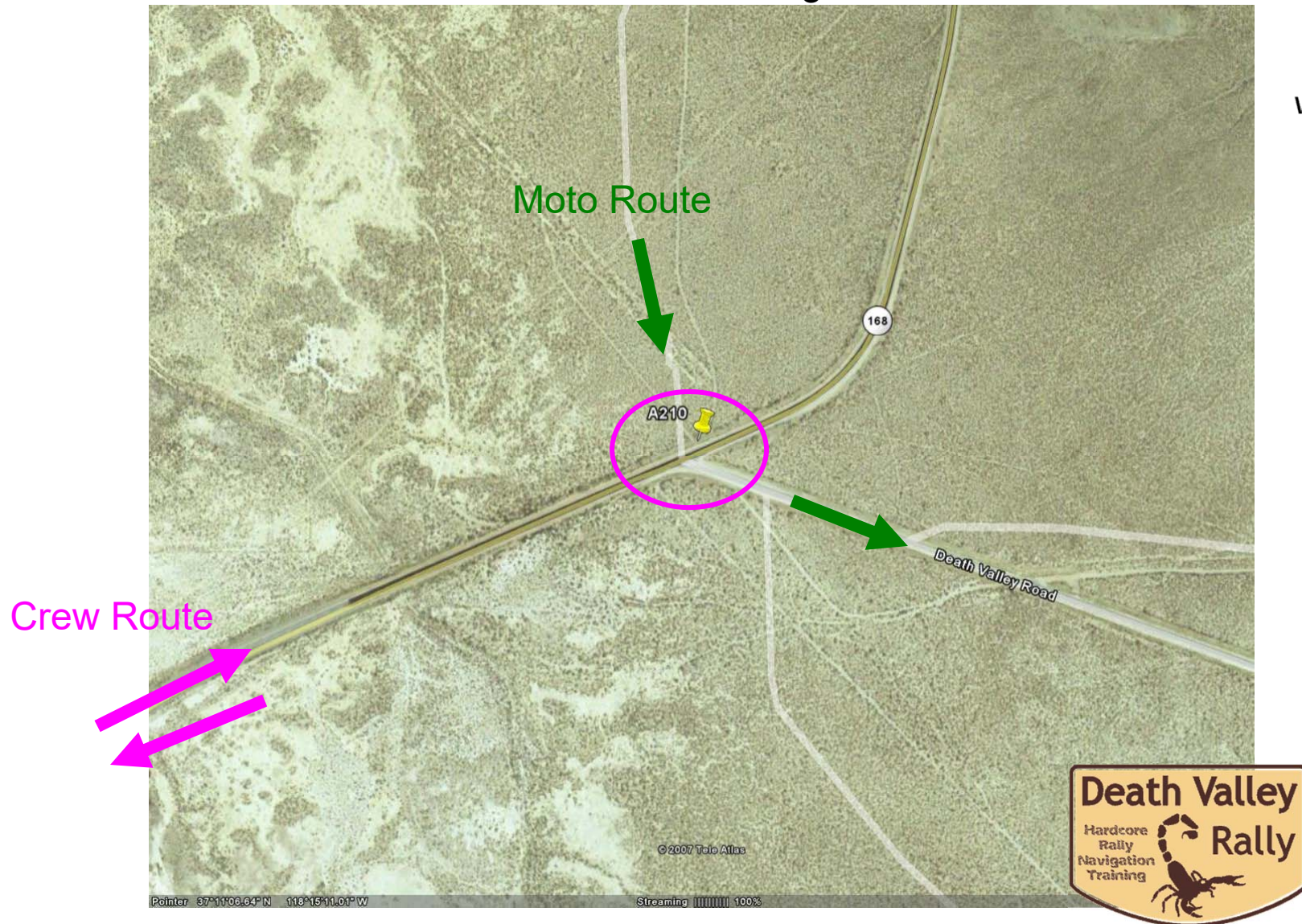
Scott Whitney

2017 Edition



# Hwy 168 Crossing

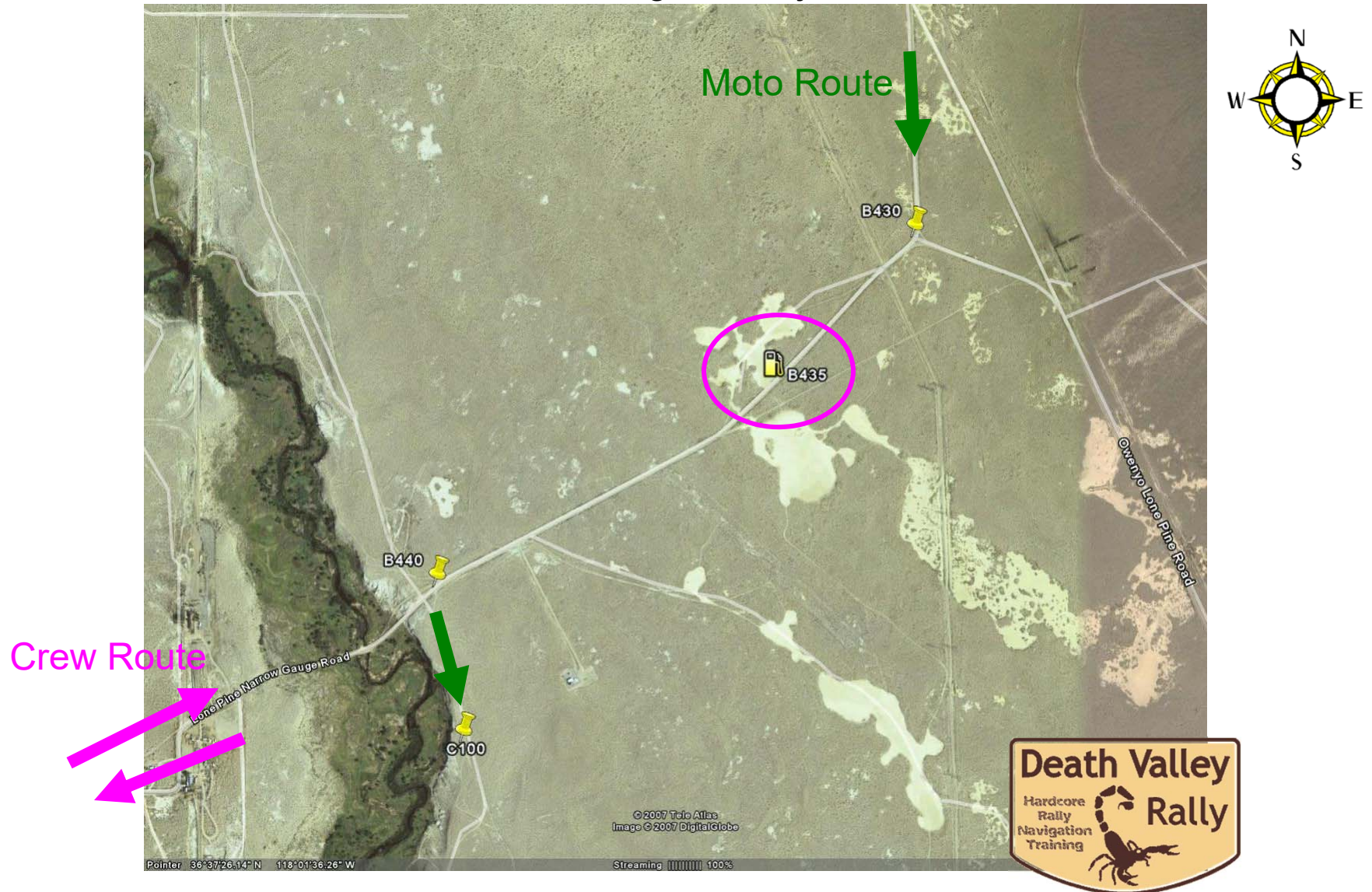
At intersection of Hwy 168 and Death Valley Road  
2.3mi East of Big Pine





# Lone Pine Mini Dry Lake

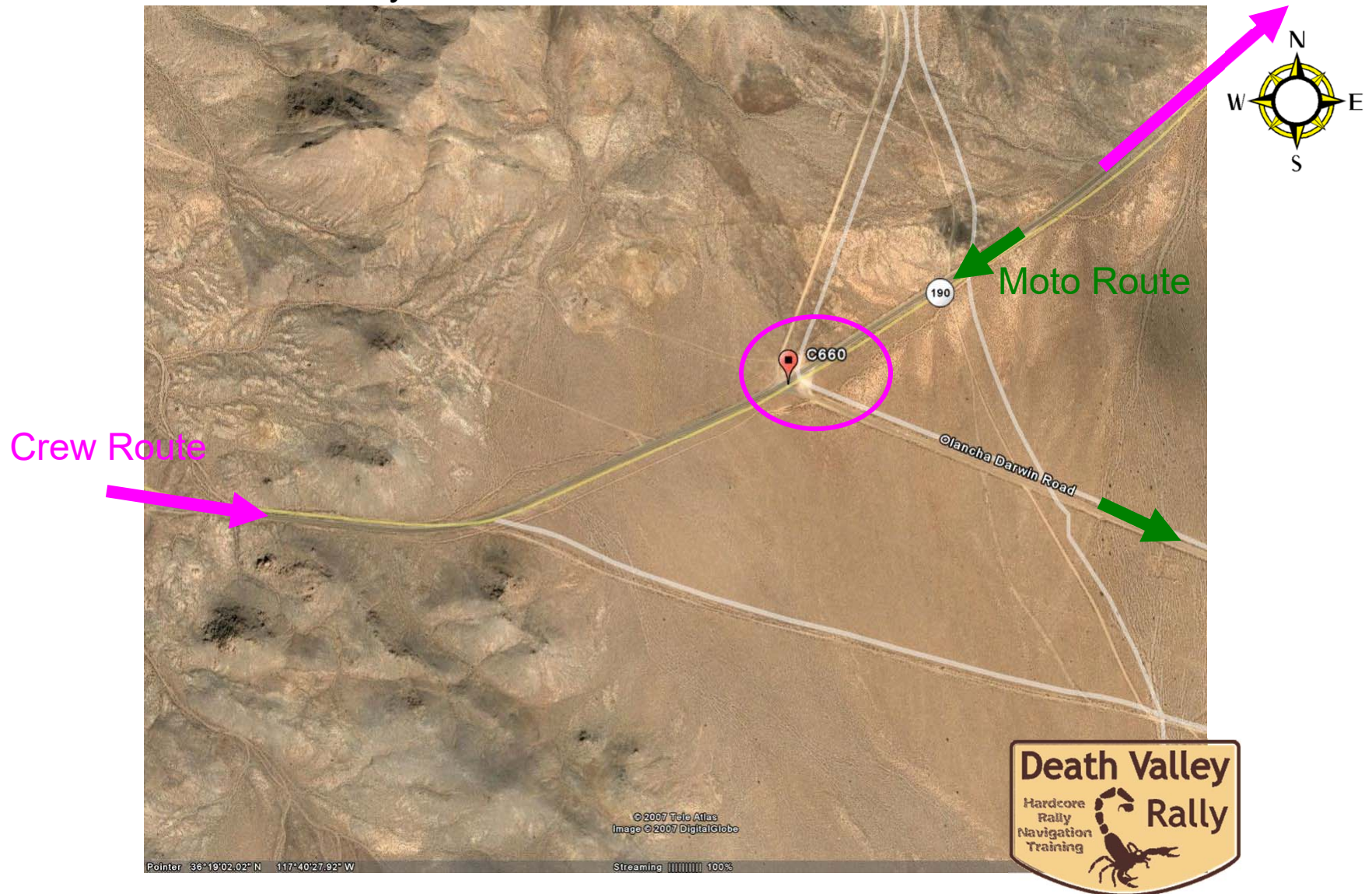
2.7mi East of Lone Pine  
on Lone Pine Narrow Gauge Road just North of town





# Darwin

About 31 miles South/East of Pig Pine  
on Hwy 190, at Olancho Darwin Road turnoff



# Panamint Springs

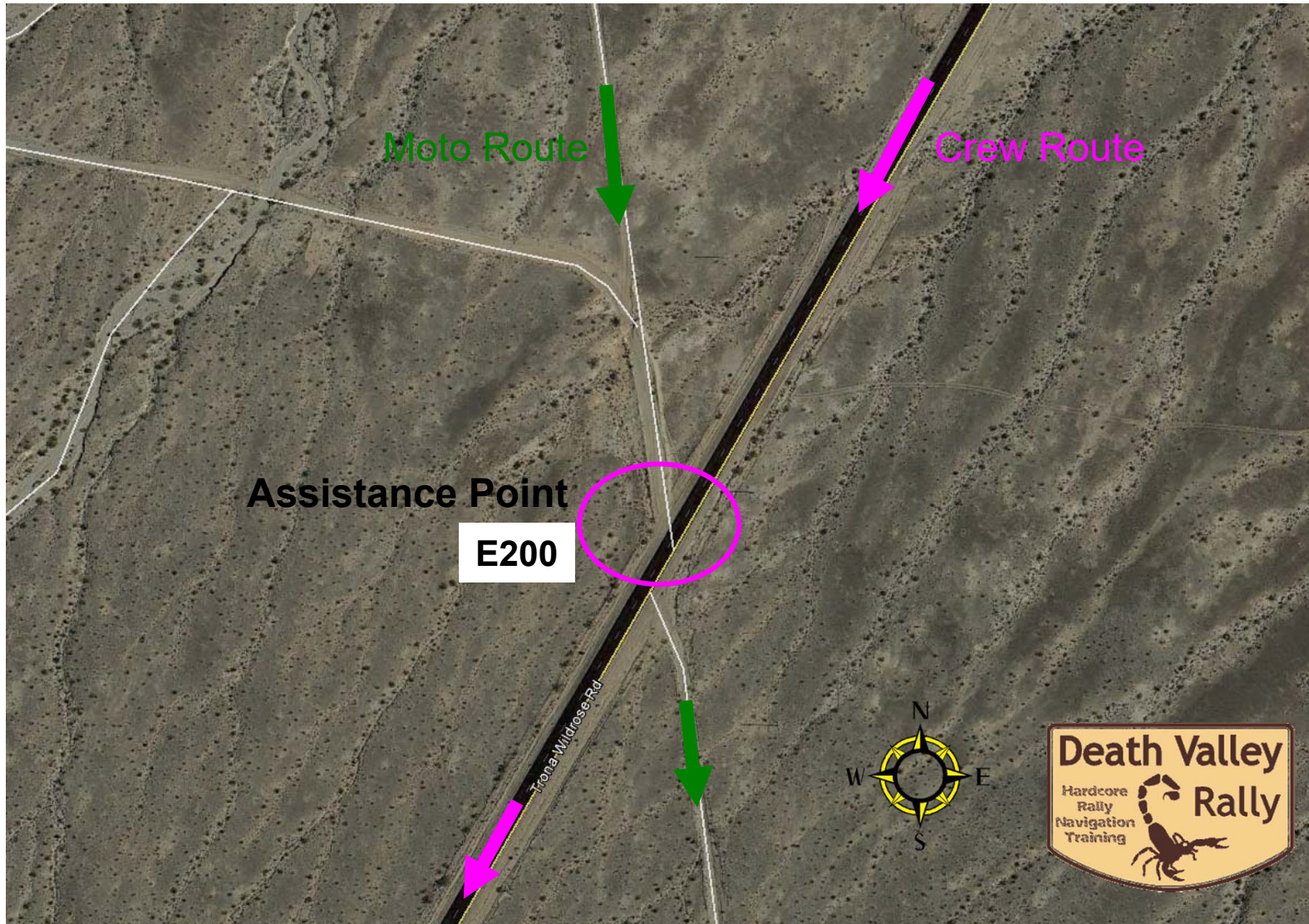
About 15-20 miles East of Darwin pit  
on Hwy 190





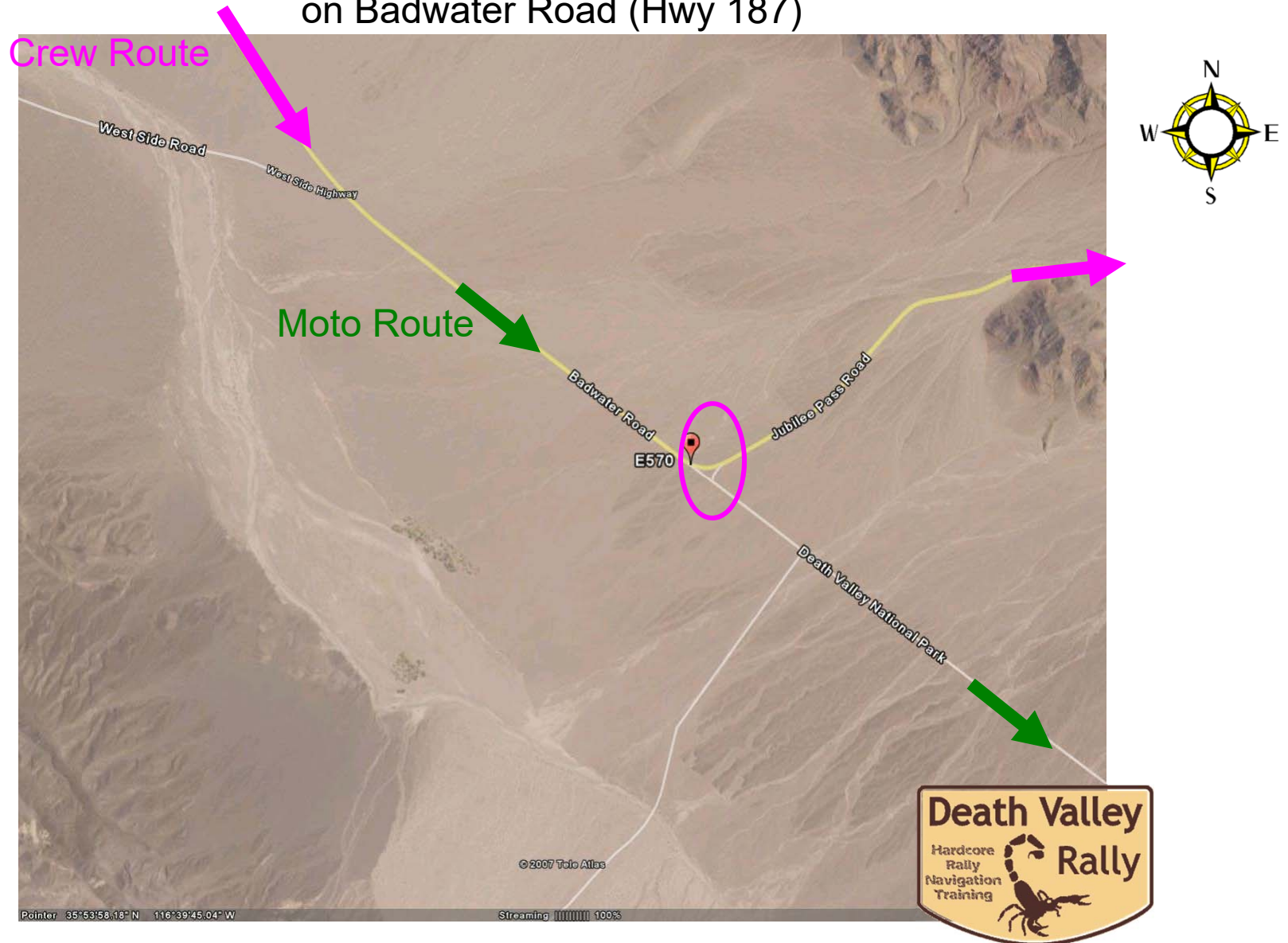
# Trona Rd

About 30 miles South of Panamint Springs  
on Panamint Valley Rd (Trona Wildrose Rd)



# Badwater Road

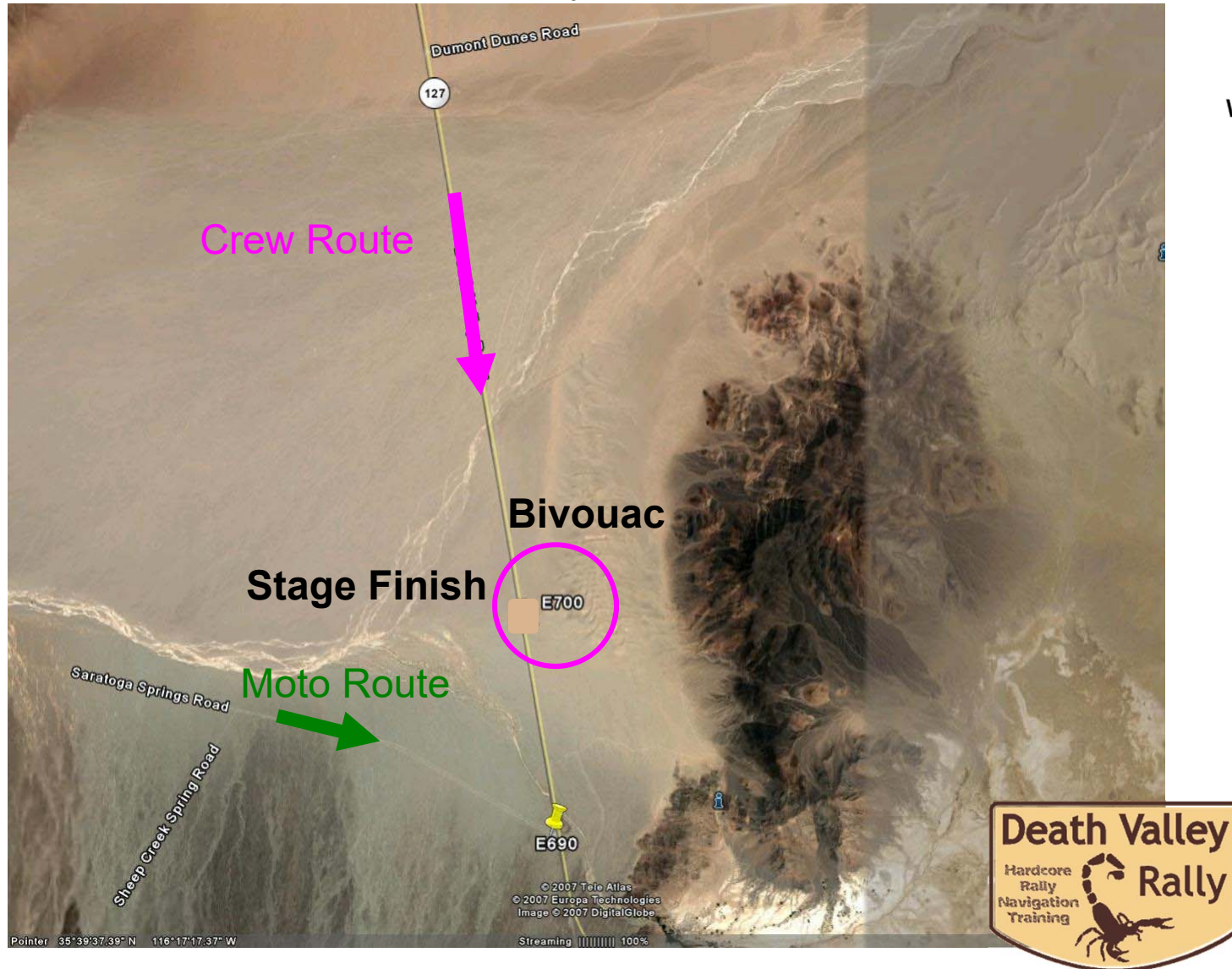
About 48 miles South of Furnace Creek in Death Valley  
on Badwater Road (Hwy 187)





# Dumont

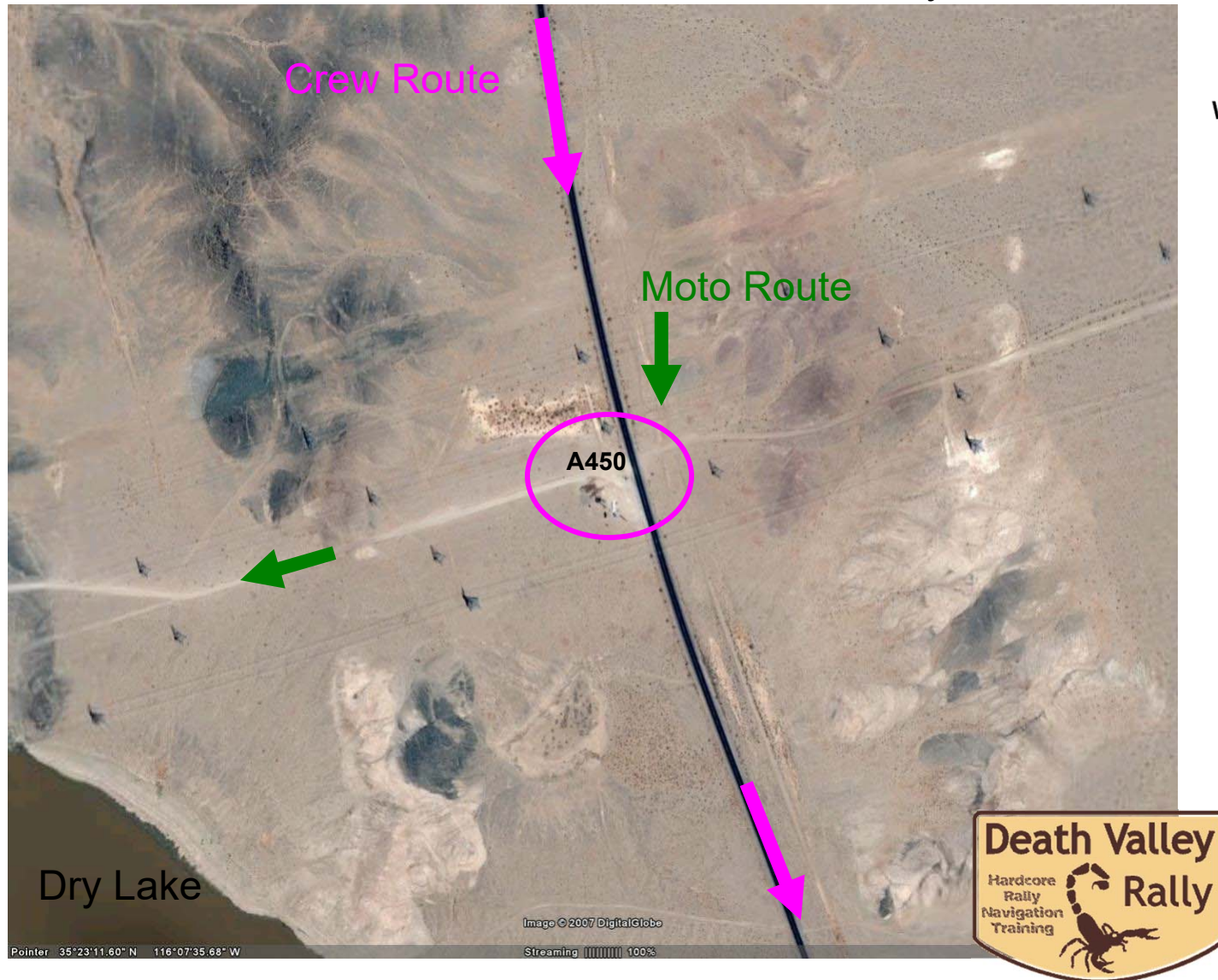
Little Dumont Dunes is about 3 miles South of the main Dumont Road on Hwy 127 between Shoshone and Baker





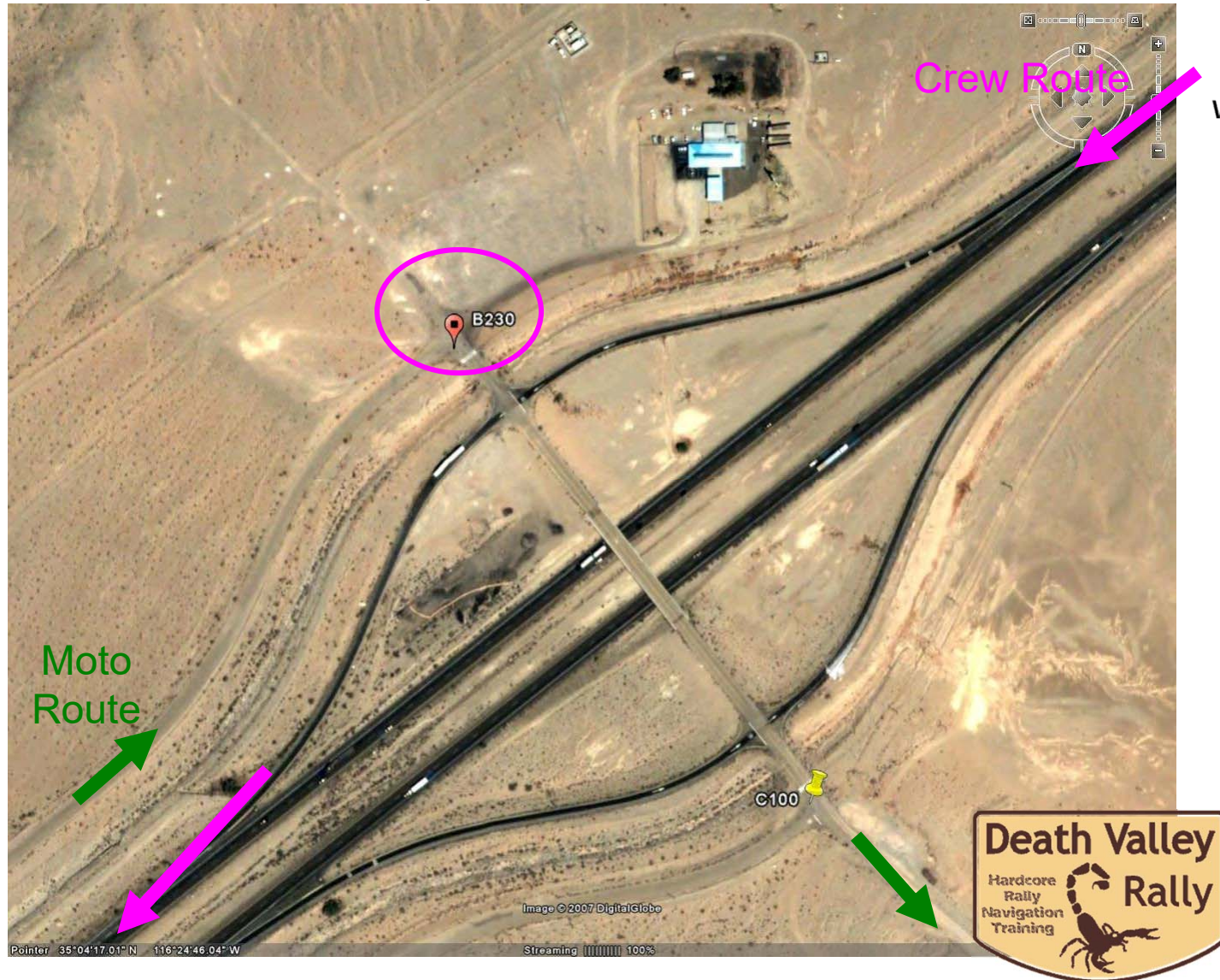
# Powerline Crossing

Powerlines cross road  
21.5mi South of Little Dumont dunes on Hwy 127



# Afton Canyon Road

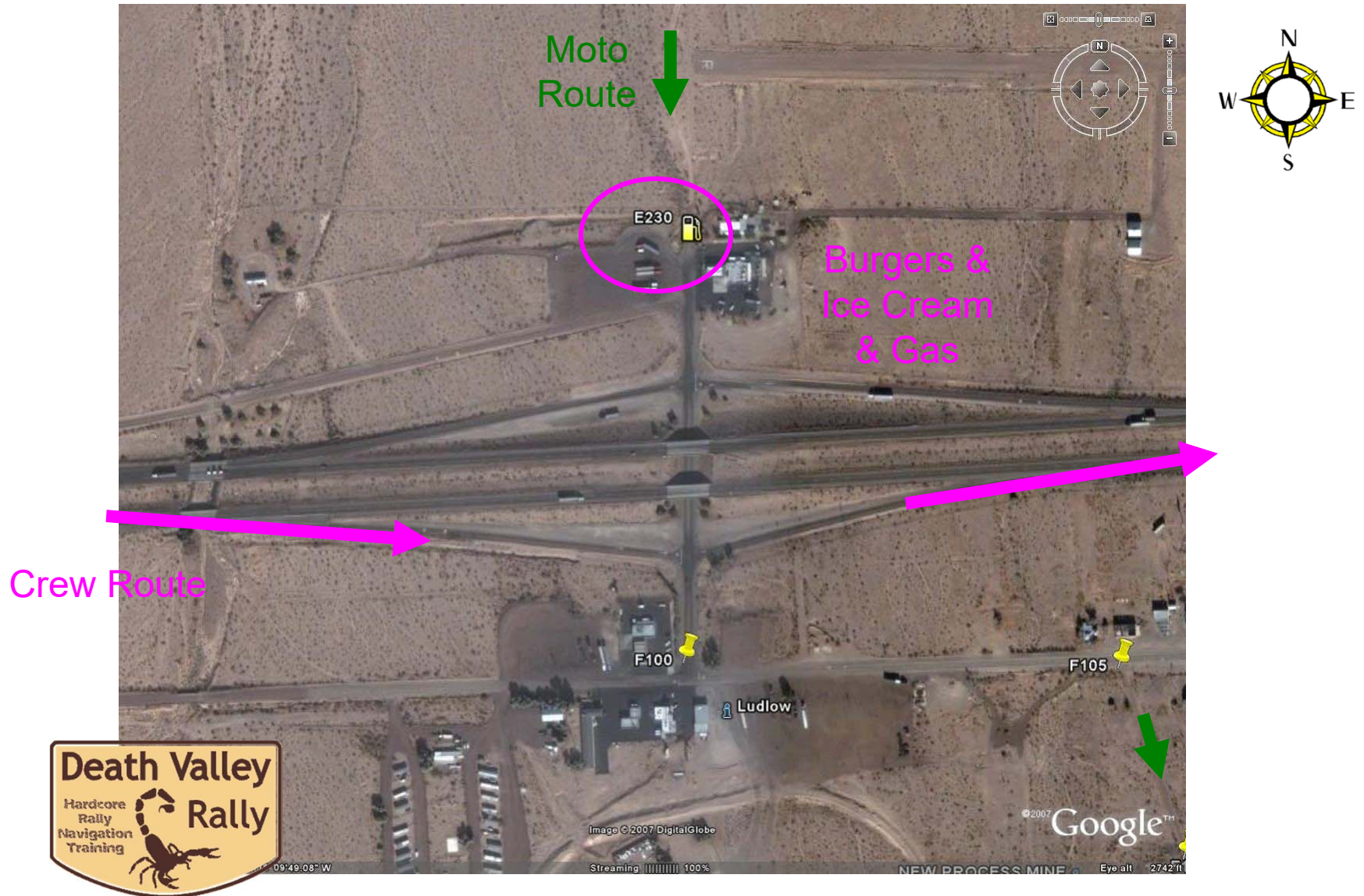
On North side of I-15 Freeway  
at Afton Canyon Exit, 25mi South of Baker





# Ludlow

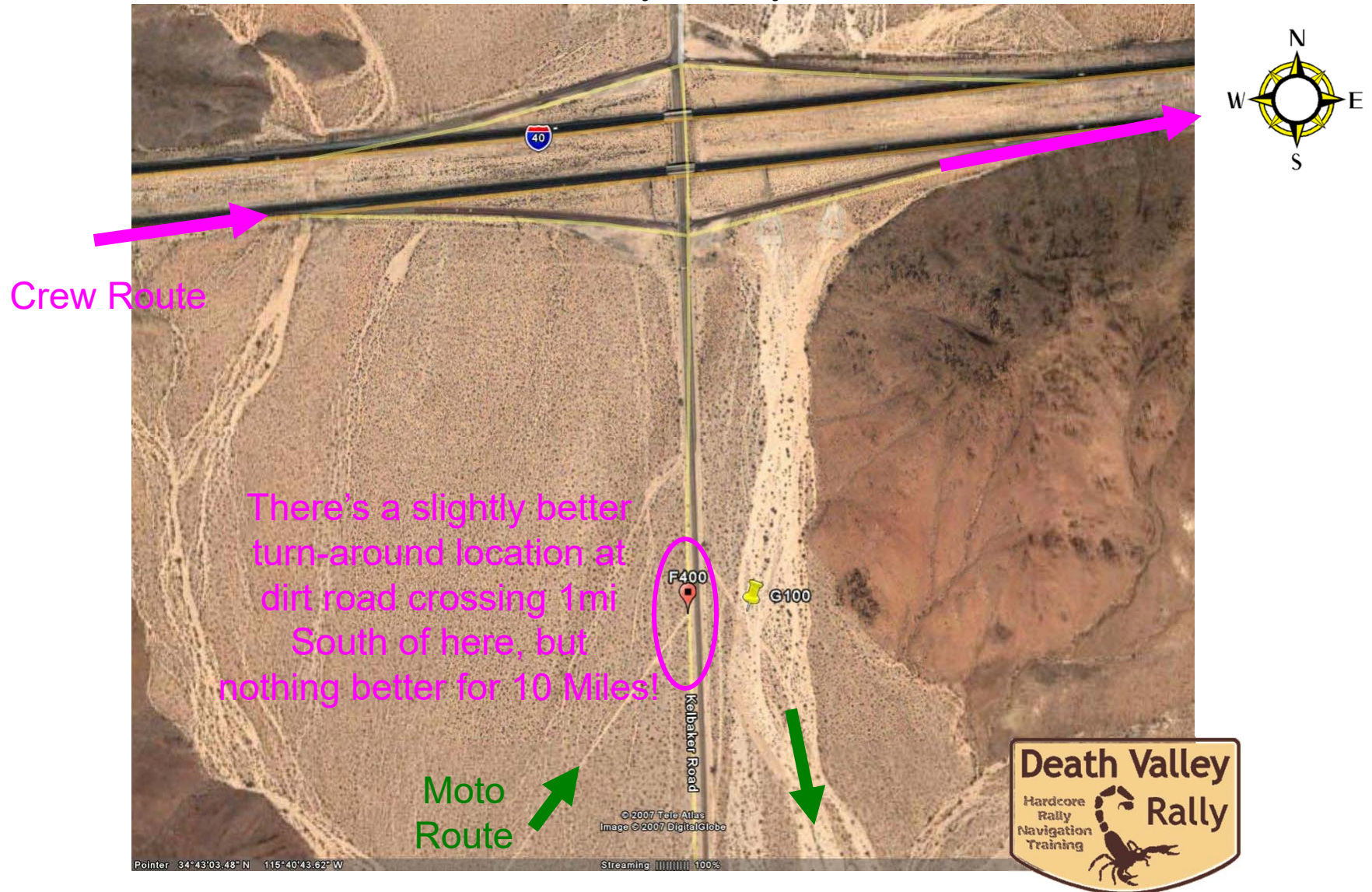
North side at Ludlow exit off I-40 Freeway  
between Barstow and Needles





# Kelbaker Road

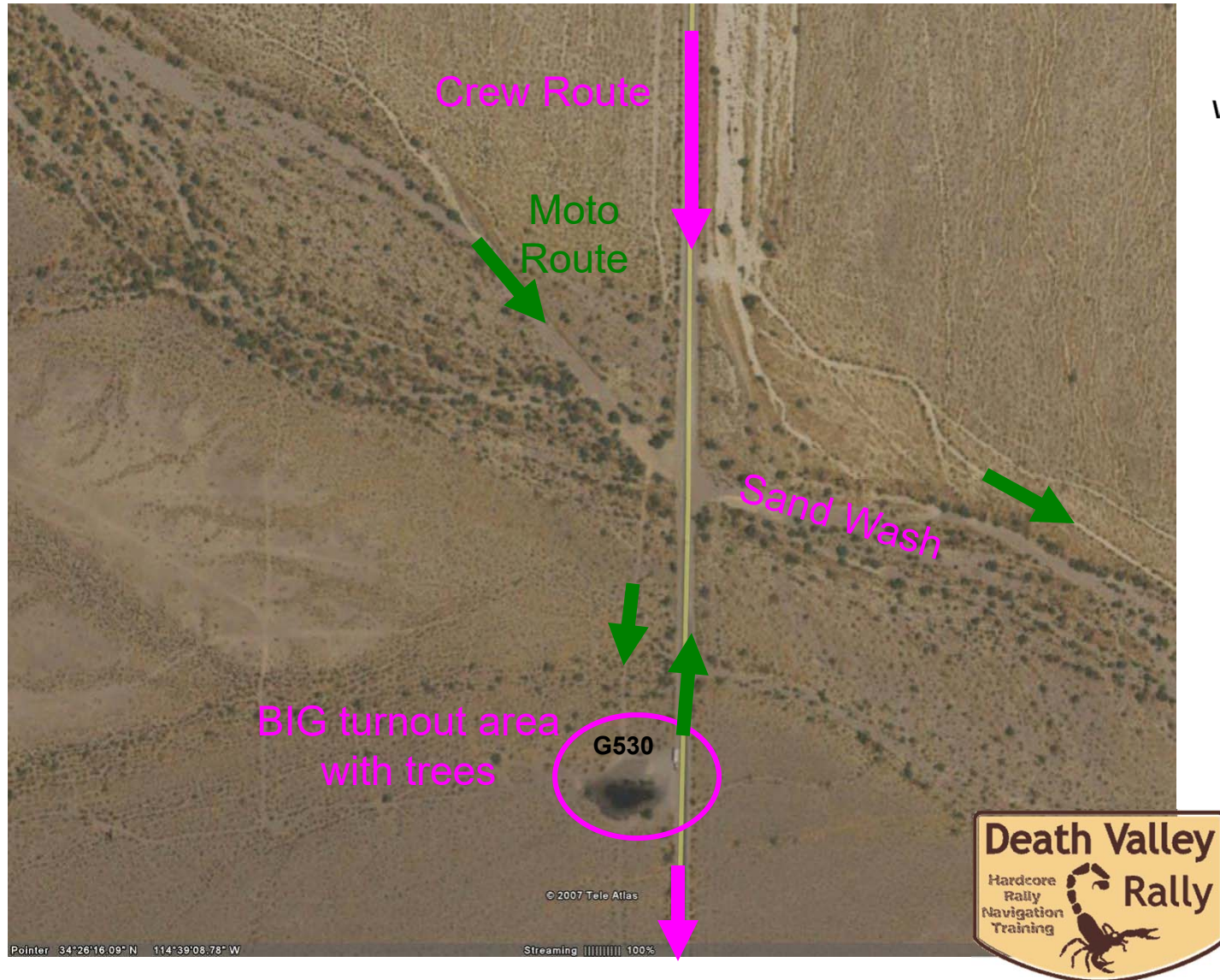
Kelbaker Road exit, 28mi East of Ludlow, off I-40 Freeway,  
1/4mi South of the Freeway, at very small dirt shoulder





# Havasu Crossing

On Hwy 95, South of Needles,  
8.5mi South of the Havasu Lake Road turnoff





# Parker

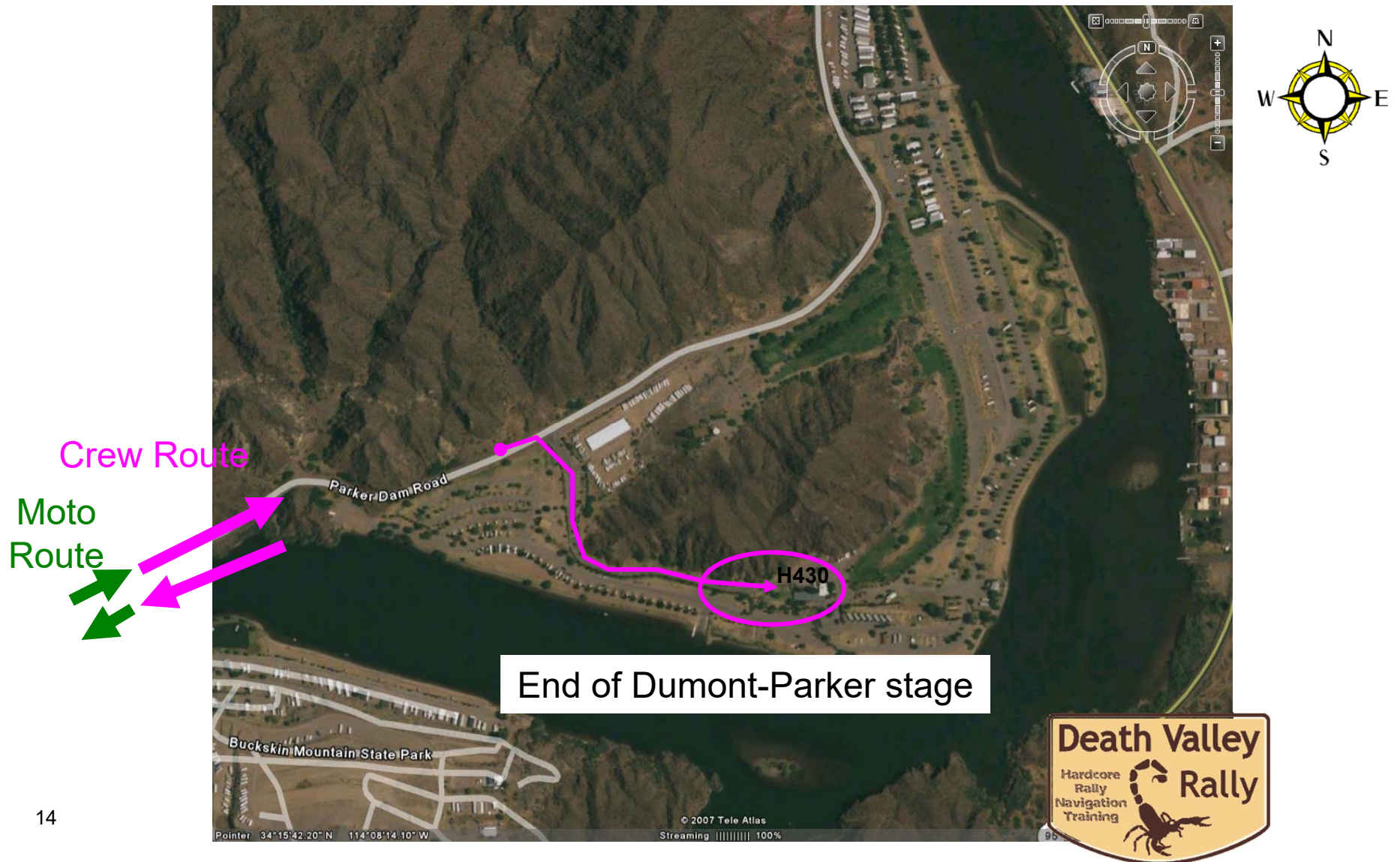
Gas station in center of Parker  
0.8mi South of Colorado river crossing





# River Lodge Resort

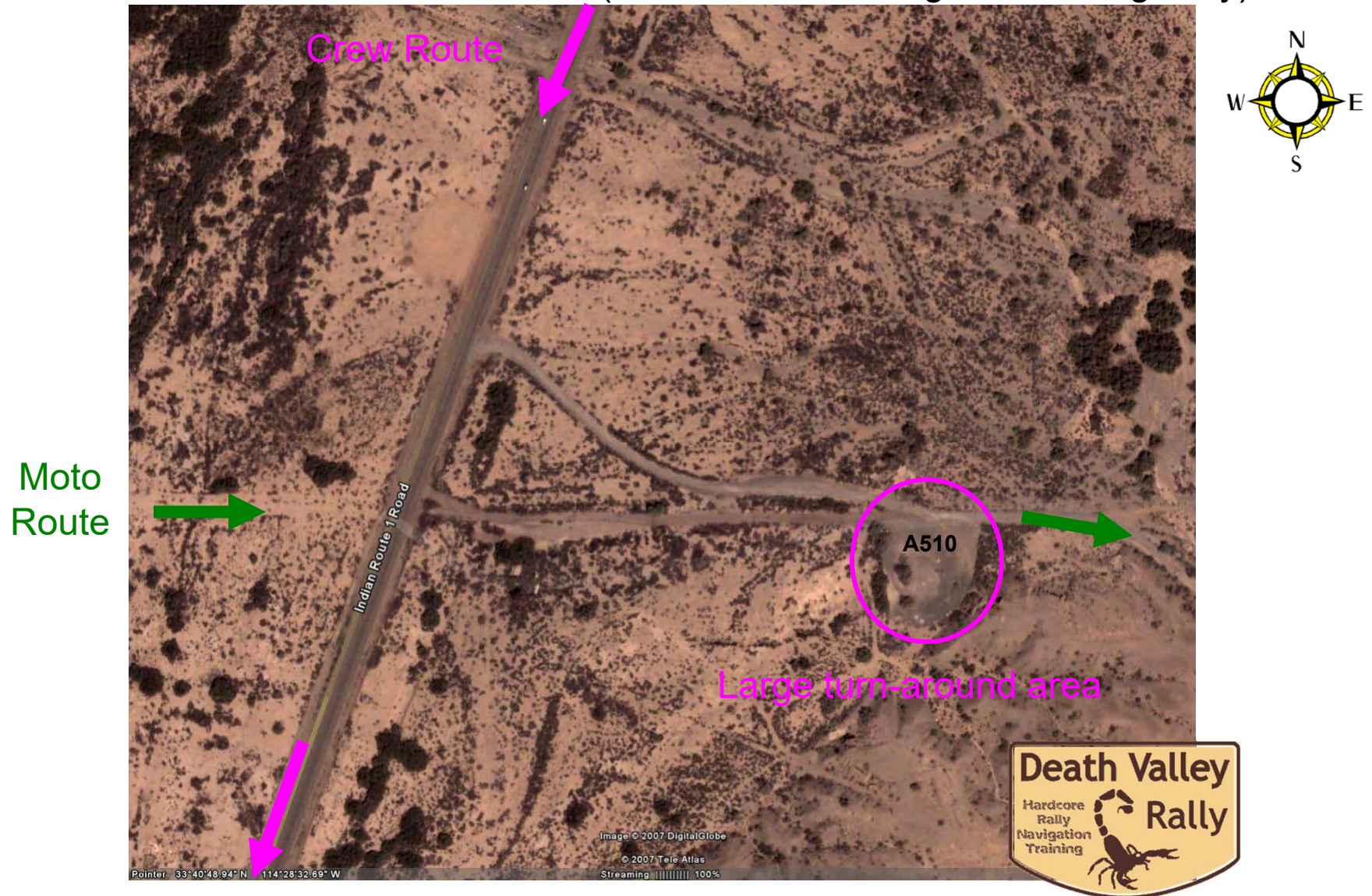
Along Colorado River on California side,  
about 14mi North/East of Parker, 2mi below the Dam





# Road Crossing

No name road, 1/4mi off Indian Route 1 (Mojave Dr, Hwy 95),  
36.5mi South of turnoff in Parker (1.5mi after minor right turn in highway)





# Ehrenberg

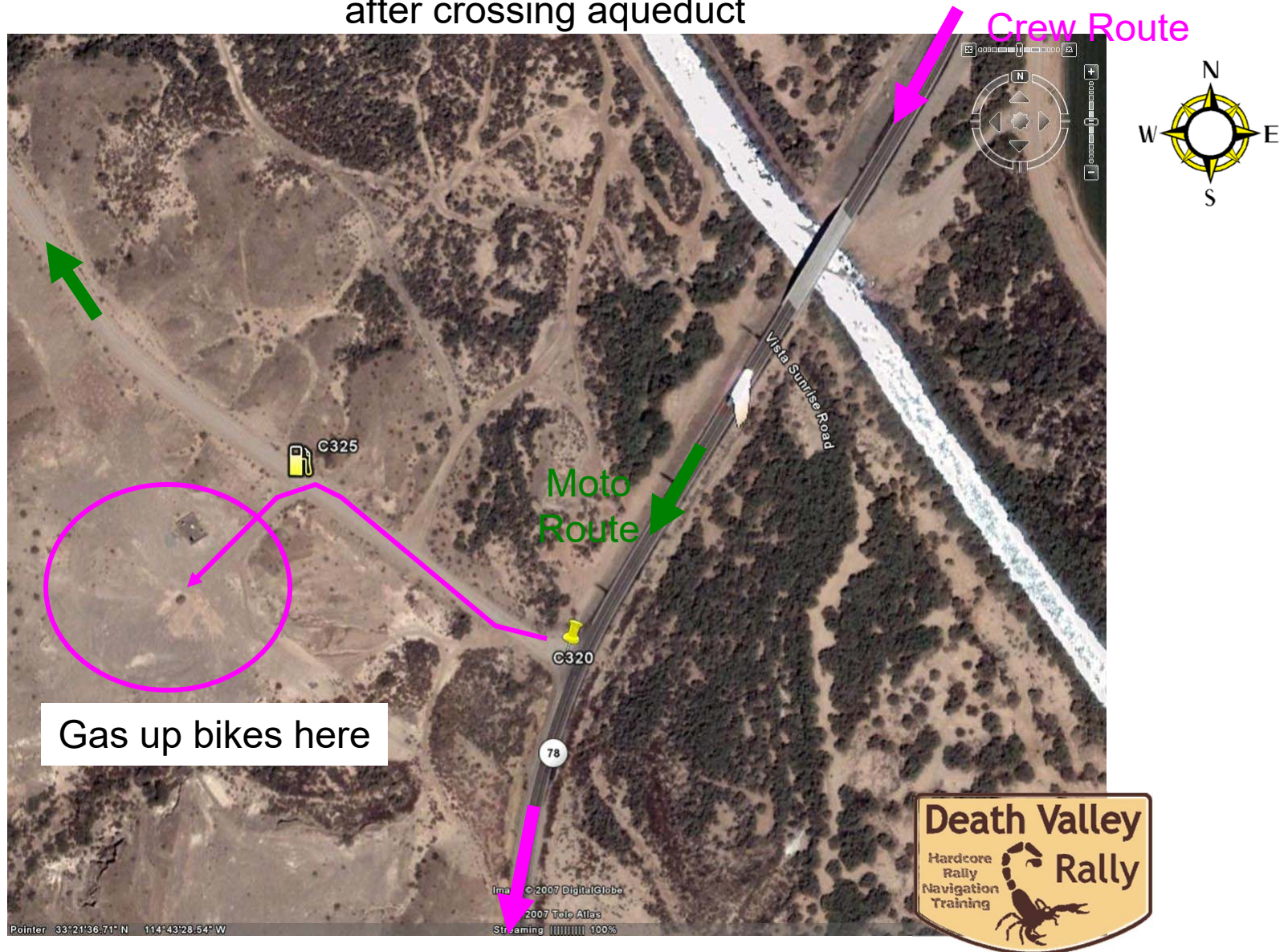
South side of I-10 Freeway, just West of Posten-Parker Rd overpass,  
one mile East of Colorado River





# Cibola

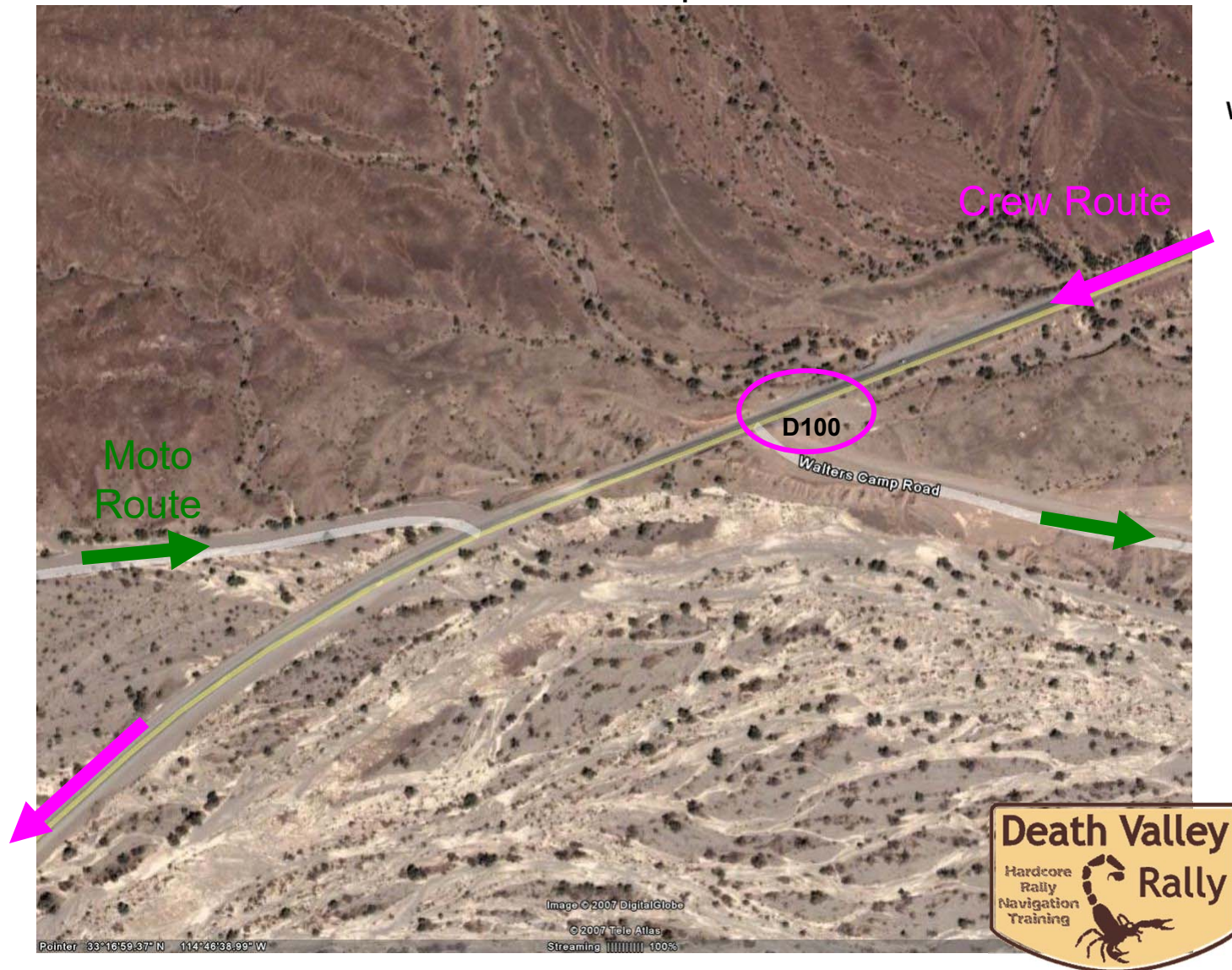
Just off Highway 78, 21mi South of I10 Freeway,  
after crossing aqueduct





# Walter's Camp

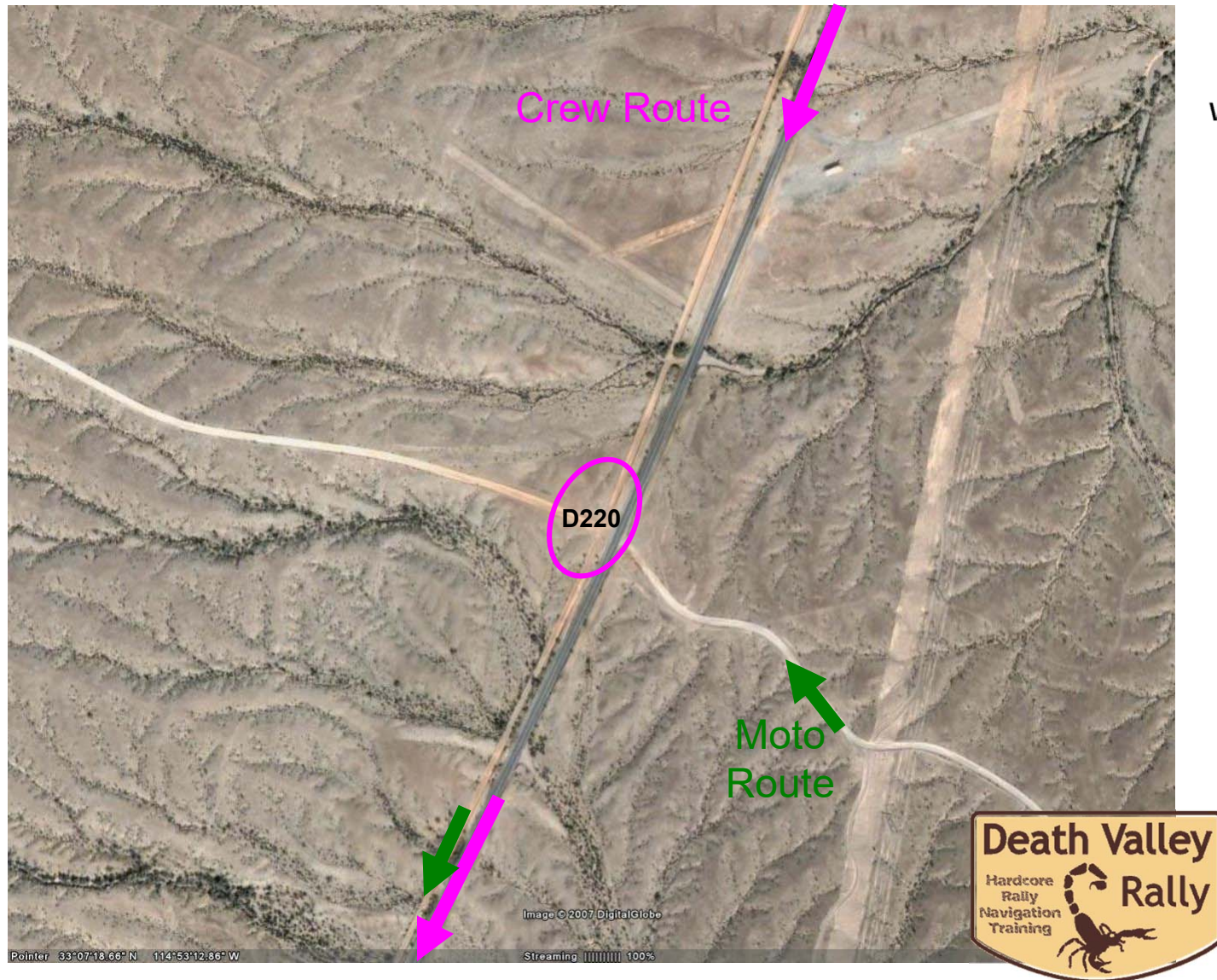
On Highway 78, 6.6mi South of Cibola pit,  
at Walter's Camp Road





# Near Border Checkpoint

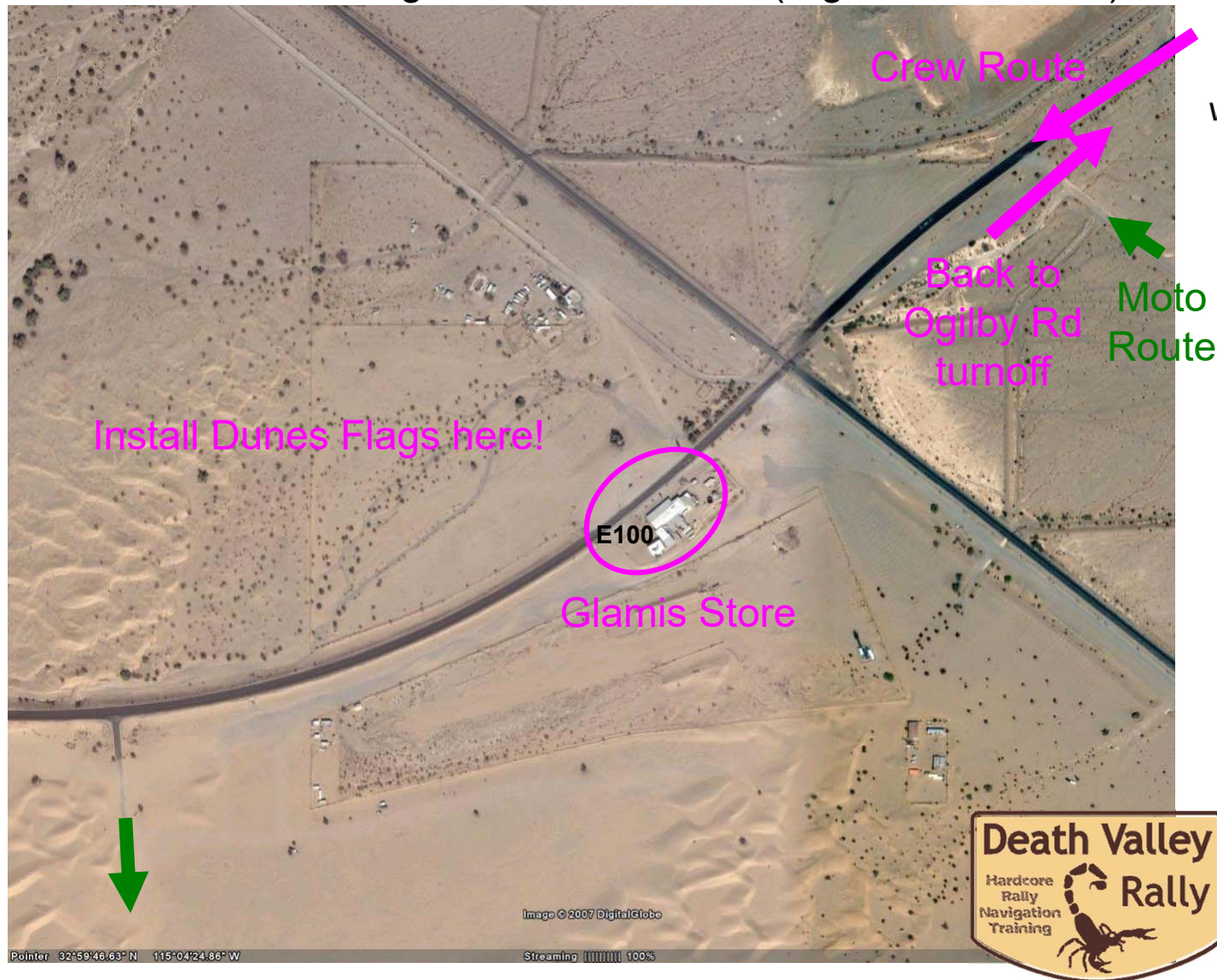
On Highway 78, where Imperial Gables Rd and Black Mountain Rd meet the highway, 1.1mi South of the boarder checkpoint. Also, 3.0mi before the Ogilby Rd (S34) turnoff.





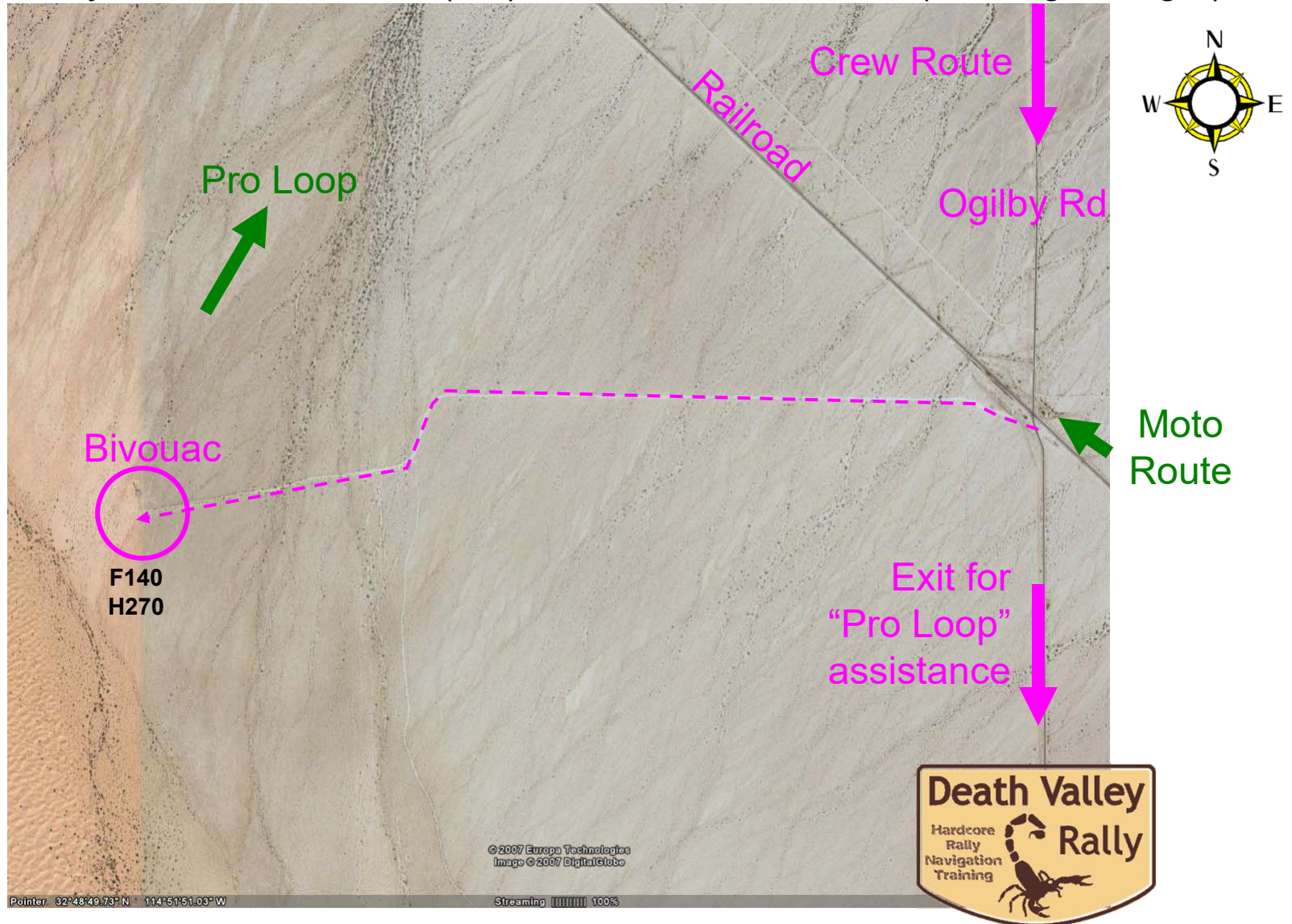
# Glamis Store

On Highway 78, just after the railroad crossing,  
at the North/East edge of Glamis Dunes (Algodones Dunes)



# Yuma Bivouac (Glamis)

Near the South/East end of Glamis Dunes, 3mi West of Ogilby Rd, 3.8mi North of I-8 Freeway, on Sidewinder Rd (dirt), at a microwave tower (flashing red light).





# Imperial Reservoir (pro loop)

Just off Imperial Dam Rd near the Imperial Reservoir.  
18mi off I-8 Freeway.



Moto  
Route

Crew Route

Back to  
Bivouac

